



Oxford Cambridge and RSA

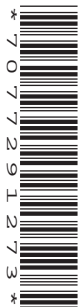
GCSE (9–1) Geography A (Geographical Themes)

J383/03 Geographical Skills

Resource Booklet

Monday 11 June 2018 – Afternoon

Time allowed: 1 hour 30 minutes



INFORMATION FOR CANDIDATES

- The questions tell you which resources you need to use.
- This document consists of **8** pages. Any blank pages are indicated.

INSTRUCTION TO EXAMS OFFICER/INVIGILATOR

- Do not send this Resource Booklet for marking, it should be retained in the centre or recycled. Please contact OCR Copyright should you wish to re-use this document.

CONTENTS OF RESOURCE BOOKLET

- Fig. 2 – Burrator Reservoir
- Fig. 3 – Farming patterns in the River Tamar catchment area
- Fig. 4 – Population Density in the Tamar catchment area
- Fig. 5 – Population Pyramid for the South Hams region of Devon
- Fig. 6 – Location of Costa Rica
- Fig. 7 – Rainforest Cover in Costa Rica
- Fig. 8 – Study sites along the River Dart

Fig. 2 – Burrator Reservoir



Fig. 3 – Farming patterns in the River Tamar catchment area

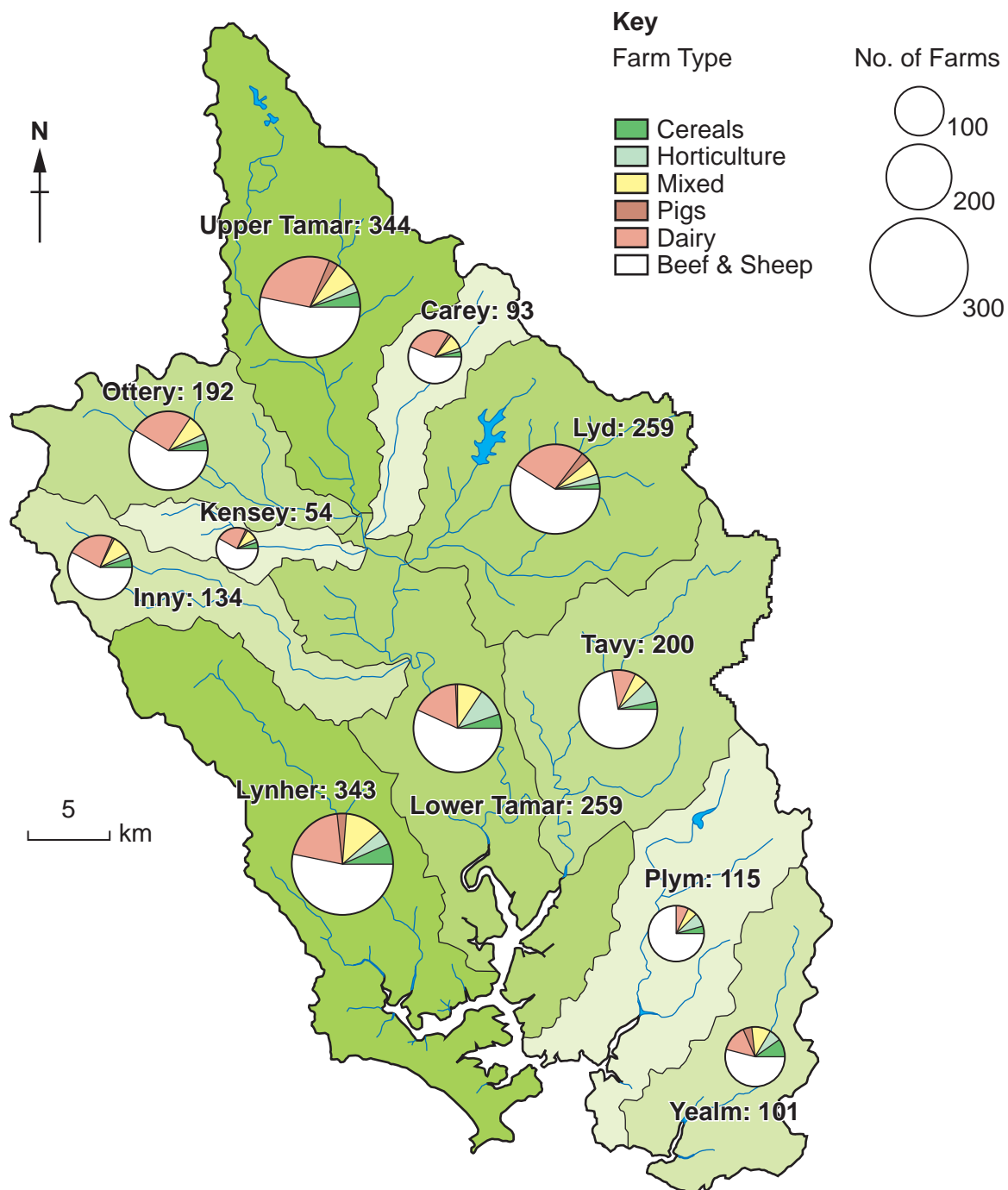


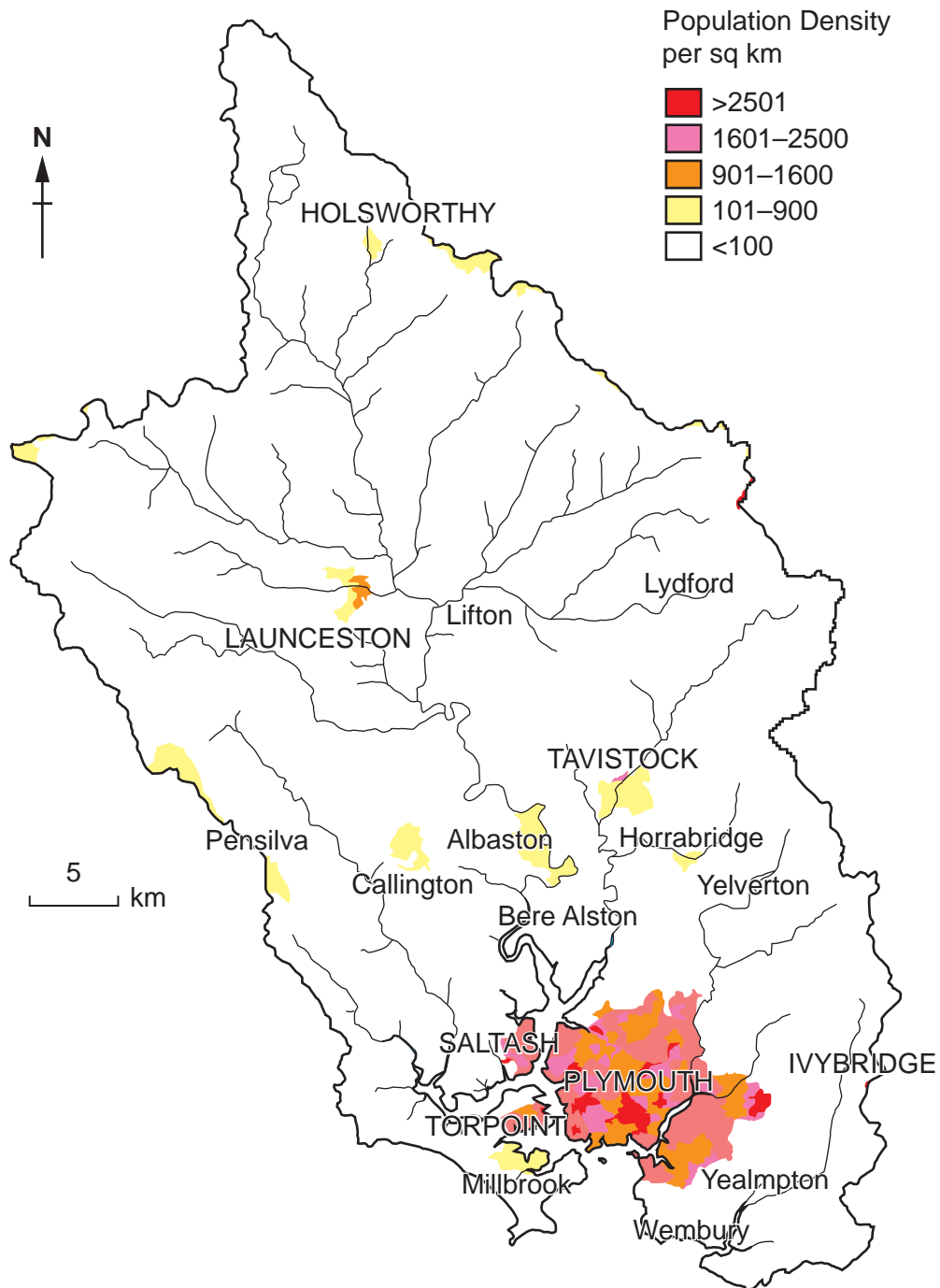
Fig. 4 – Population Density in the Tamar catchment area

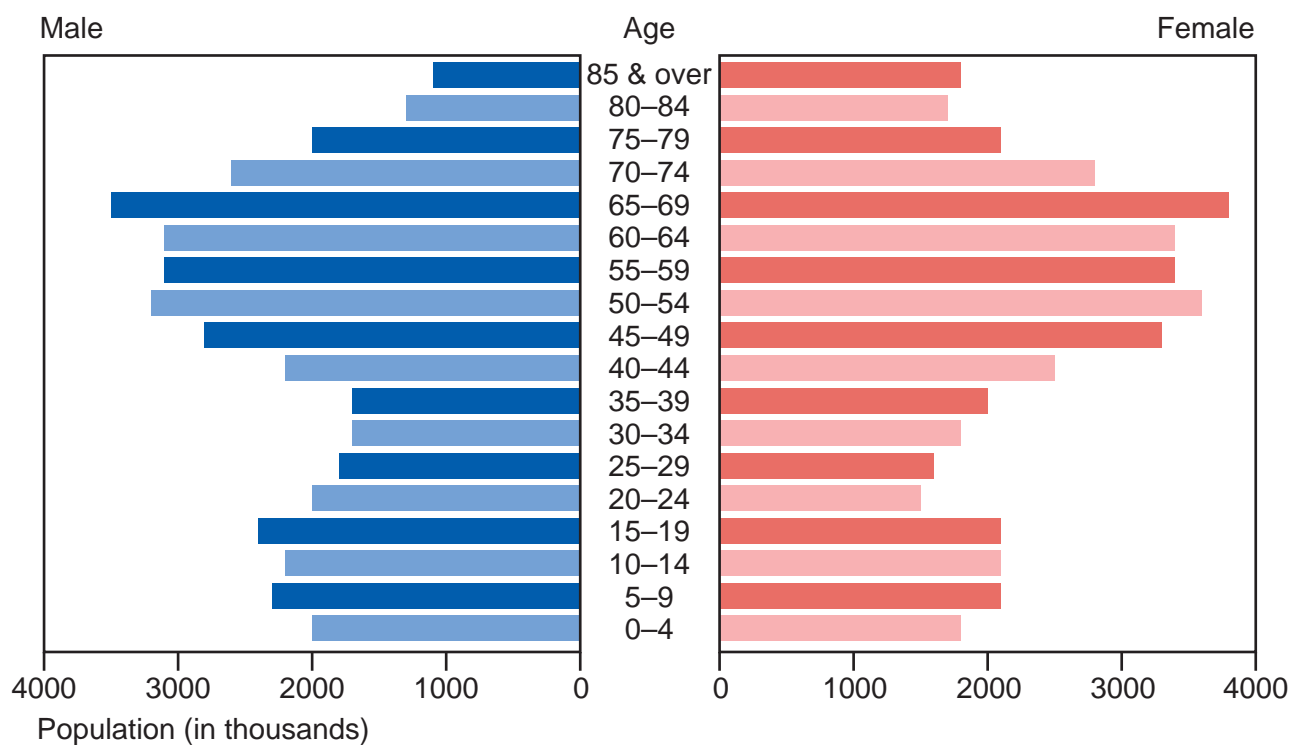
Fig. 5 – Population Pyramid for the South Hams region of Devon

Fig. 6 – Location of Costa Rica



Fig. 7 – Rainforest Cover in Costa Rica

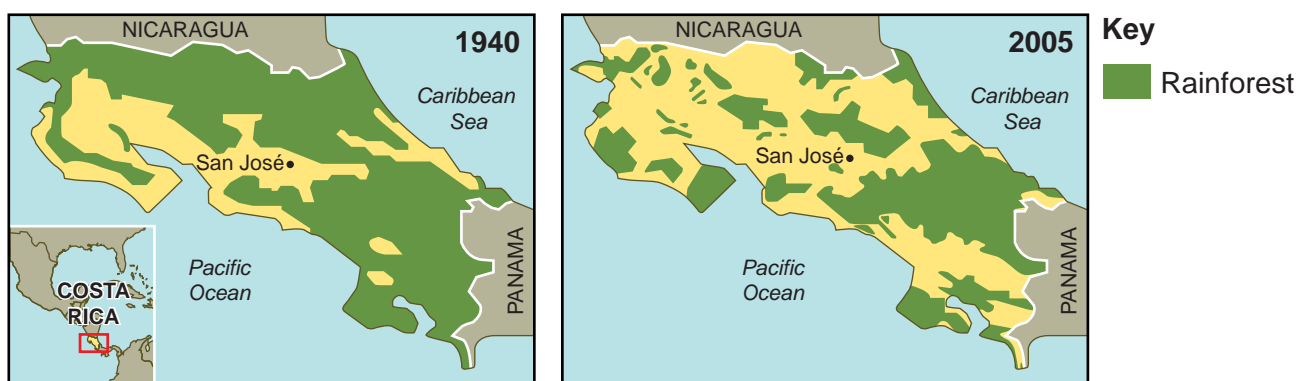
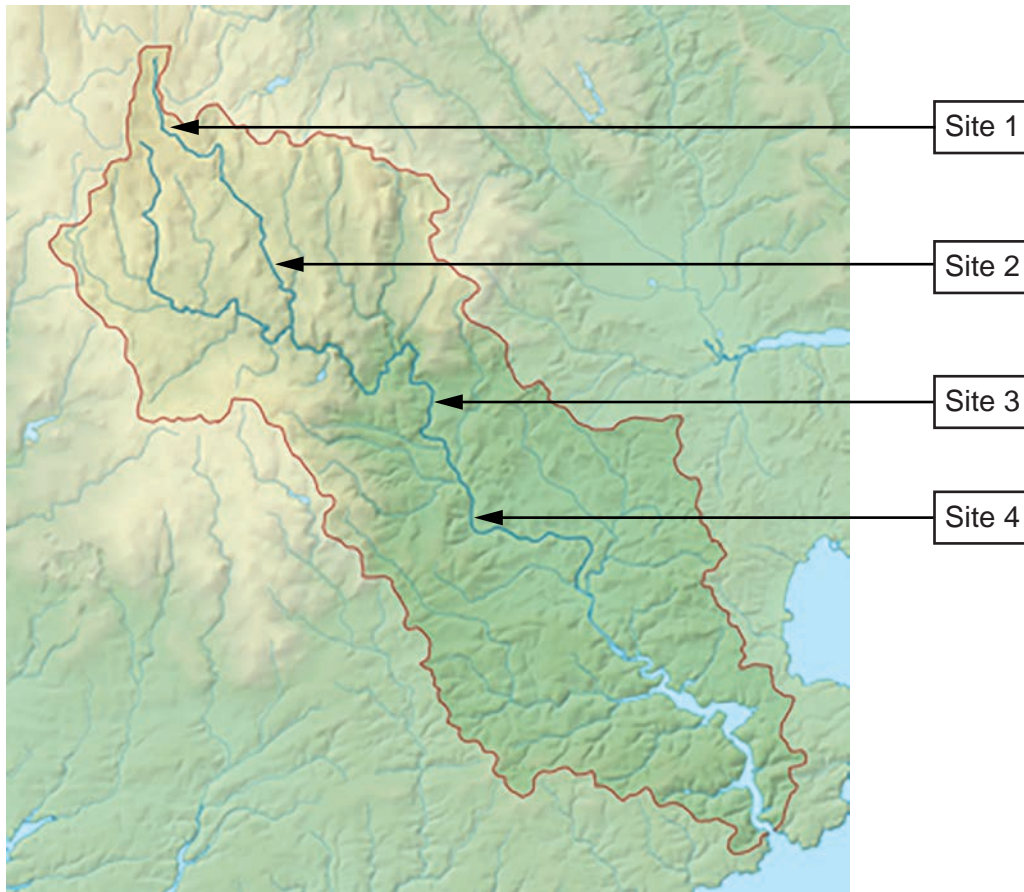


Fig. 8 – Study sites along the River Dart



**Copyright Information**

OCR is committed to seeking permission to reproduce all third-party content that it uses in its assessment materials. OCR has attempted to identify and contact all copyright holders whose work is used in this paper. To avoid the issue of disclosure of answer-related information to candidates, all copyright acknowledgements are reproduced in the OCR Copyright Acknowledgements Booklet. This is produced for each series of examinations and is freely available to download from our public website (www.ocr.org.uk) after the live examination series.

If OCR has unwittingly failed to correctly acknowledge or clear any third-party content in this assessment material, OCR will be happy to correct its mistake at the earliest possible opportunity.

For queries or further information please contact the Copyright Team, First Floor, 9 Hills Road, Cambridge CB2 1GE.

OCR is part of the Cambridge Assessment Group; Cambridge Assessment is the brand name of University of Cambridge Local Examinations Syndicate (UCLES), which is itself a department of the University of Cambridge.